

LOCOMOTION

FREE ENTRY
DONATIONS WELCOME

MUST SEE

WELCOME TO A PLACE FULL OF AMAZING OBJECTS AND WORLD CHANGING IDEAS

Locomotion is home to some of the most Must See engineering innovations to ever hit the rails. Find out more about our collection with this handy guide.

MOVING FORWARD

Railways have always been developing new technology to improve access, speed and efficiency. Find out about some of these pioneering vehicles and the impact they had.



LOCOMOTION NO. 1

Get up close and personal with the very first steam locomotive to pull a passenger train on a public railway.



NORTH EASTERN RAILWAY NO. 1

Dive in to the horrible circumstances that led to the development of one of Great Britain's earliest electric locomotives.



DELTAIC

Discover the story behind the bright blue behemoth of Great Britain's railways and how it moved Great Britain on from the humble steam locomotive.



MERRY GO ROUND WAGON

Drop in on the revolutionary coal carrying wagon that was developed and built in Shildon.



APT-E

Go around the bend with the train that gave birth to high speed rail travel all over the world.

MOVING PEOPLE

Over 1.7 billion people travel on Great Britain's railways every year. Find out how comfort, safety and privacy has changed over time.



2-HAP

Moving lots of people makes lots of money. The 2-HAP did this successfully for decades.



NIGHT FERRY SLEEPER CAR

Ever wondered how a train used to get across the sea? The Night Ferry Sleeper Car is your answer.



EAST COAST JOINT STOCK

Discover how third class passengers travelled at the turn of the 20th century.



ROYAL SALOON

You don't need to visit Buckingham Palace to see where royalty slept and bathed. Queen Alexandra's Royal Saloon was a palace on wheels.



COMPOSITE CARRIAGE

Step back in time to see how the earliest railway passengers travelled and what it was like to work on the railway in the 19th century.



PACER NO. 142001

Love it or hate it, the bus-based Pacer has been a staple of Great Britain's railways from the 1980s to the present day.

MOVING GOODS

The railways have been used for moving goods for over 2,500 years. Find out more about what you can actually achieve on a railway with these remarkable vehicles.



ELLINGTON MINING LOCOMOTIVE

Dig deep and discover the tiny details that tell the story of this weird looking locomotive and its driver.



WARFLAT

Find out how the Second World War changed Great Britain's railways and why wagons like these were unlikely heroes.



TAMPING MACHINE

Learn how this small yellow machine was the solution to Great Britain's railway troubles after the Second World War.



BLACK FIVE NO. 5000

Get a driver's eye view from this huge steam locomotive and imagine what life was like on the footplate.



SIPHON G

Delve in to the history of this wagon and discover what milk, injured soldiers and generators have in common.

HISTORIC BUILDINGS

We have completed a project to protect and preserve these historic buildings for the future. Why not have a walk and immerse yourself in a railway landscape of nearly 200 years ago?



SOHO HOUSE

The Stockton & Darlington Railway built this house for their Locomotive Superintendent, Timothy Hackworth. There aren't many jobs that would provide you with a house today.



LINE SIDE CABINS

These small buildings mark the point where three early horse-drawn railways met. They were probably used by the people employed to look after the railway, such as platelayers and bank riders.



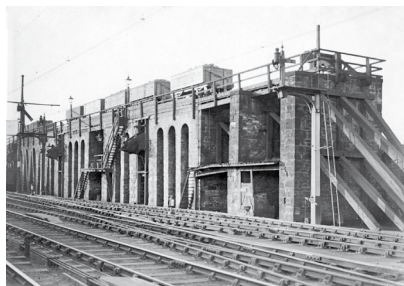
GOODS SHED

Recycling sounds like a new idea, but it isn't. The stones that make up this building are old Stockton & Darlington Railway sleepers that originally held railway tracks in place. Can you see the holes in them?



KILBURN'S WAREHOUSE

Bits of iron, steam locomotives, boxers and a silver band have all inhabited this old warehouse, at different times of course.



COAL DROPS

The coal drops were where steam locomotives were refueled. You had wagons full of coal on top, steam locomotives beneath, and gravity doing all the hard work.

FORTHCOMING EXHIBITIONS, EVENTS AND ACTIVITIES

SCHOOL HOLIDAY LEARNING

Free, fun activities recommended for 4-11 year olds.

22-30 October 2022: Leaves on the Line

17 December 2022-3 January 2023: Festive Science

18-26 February 2023: Construction

SHILDON MODEL RAILWAY CLUB EVENT

8 & 9 October 2022

Model railway displays, demonstrations and trade stands.

SHILDON BRICK SHOW

5 & 6 November 2022

Hosted in conjunction with Brick Alley LEGO® User Group.

INNOVATION PLATFORM

11 Jan 2023-June 2023

Be inspired by the latest in rail ingenuity. Discover the Prometheus drone which uses AI to scan underground, crucial for railway maintenance.

BRITISH SCIENCE WEEK

10-19 March 2023

Exploring the theme of connections.

REGULAR ACTIVITIES

FAMILY ACTIVITIES

Explore the museum and ignite your curiosity with family friendly trails, activities and workshops.

Available throughout the year.

LITTLE LOCOS

A regular session for our visitors aged five and under, and their families.

EARLY BIRDS

Our special early-morning session for visitors with sensory needs who wish to explore the museum in a quieter environment.

TALKS

Join us for seasons of inspiring talks, exploring everything from railway history to the culture of accessibility within STEM (science, technology, engineering and maths).

Events and activities are free, but booking may be required. Please see locomotion.org.uk for details.

Our programme may change at short notice – please check before you visit.

KEEPING YOU SAFE

The wellbeing of our visitors, colleagues and local community is our top priority.

To keep your visit safe and enjoyable we have made some changes to the museum, which we regularly review.

Check our website and the latest government guidance before you visit.

OPENING TIMES

Open Wednesday–Sunday, 10.00 to 16.00 (winter), 10.00 to 17.00 (summer).

Our opening times may change at short notice – please check before you visit.

Extended opening in school holidays – visit locomotion.org.uk or call 0330 058 0058 for details.

FIND US

Locomotion
Shildon, County Durham DL4 2RE
T 0330 058 0058

For information about getting here, parking and access visit locomotion.org.uk

Travel to Locomotion by bus or train with a Bishop Train & Bus Day Ranger ticket – visit bishopline.org for more details.

FOLLOW US

 LocomotionSHD

 @LocomotionSHD

LOCOMOTION

KEEP IN TOUCH

Sign up to our email newsletter at locomotion.org.uk to be the first to hear about our events and activities.

EATING + SHOPPING

Take a break to recharge your batteries in our café or bring your own packed lunch to enjoy in our picnic spaces.

Choose a treat for yourself or a loved one from our wide selection of railway gifts, books and souvenirs.

YOUR SUPPORT

Locomotion is a charity and relies on donations to look after the objects that tell the story of human innovation.

Help us continue to share these stories of railway history here in the heart of Shildon, the first railway town in the world.

You can donate online or in-person. If you're eligible, Gift Aid can make your donation go even further. Thank you.

OUR GROUP

We are part of the Science Museum Group, which also includes:

- Science Museum, London
- National Science and Media Museum, Bradford
- Science and Industry Museum, Manchester
- National Railway Museum, York

Locomotion is supported by Durham County Council.

**SCIENCE
MUSEUM
GROUP**



All images © The Board of Trustees of the Science Museum Group.
Information correct at time of print.

Autumn 2022